

Setting Up Your Laptop On Our Network using Windows 2000

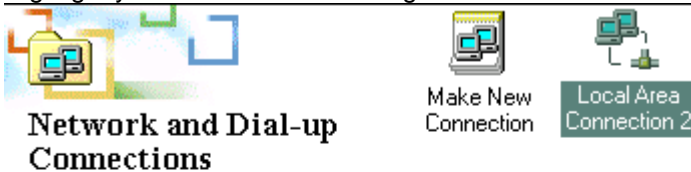
Disclaimer:

Henderson District Public Libraries (HDPL) does not provide firewall protection through the use of HAWK network service and is neither responsible nor liable for any viruses or other contamination of your system nor for any delays, inaccuracies, errors or omissions arising out of your use of this free service or with respect to the material contained on the Internet, including without limitation, any material posted on the Internet. Access to this service and all materials contained on it are distributed and transmitted "as is" without warranties of any kind, either express or implied, including without limitation, warranties of title or implied warranties of merchantability or fitness for a particular purpose. The HDPL is not responsible for any special, indirect, incidental or consequential damages that may arise from the use of, or the inability to use, the service and/or the materials contained on the Internet whether the materials contained on the Internet are provided by the HDPL, or a third party.

Instructions:

These instructions are for advanced users. This guide assumes that your computer has a network adapter and **TCP/IP** already installed. If your laptop is currently setup with a static IP address, we suggest you write down your settings before making any changes. HDPL cannot be responsible for any problems you may have after changing your IP address. Our reference staff cannot help you make these changes. You must provide your own network cable to connect to our network.

1. Start your system normally.
2. Once started, click on Start, Settings, Network & Dial-up Connections.
3. Highlight your LAN connection. Right-click on the connection, and choose Properties.



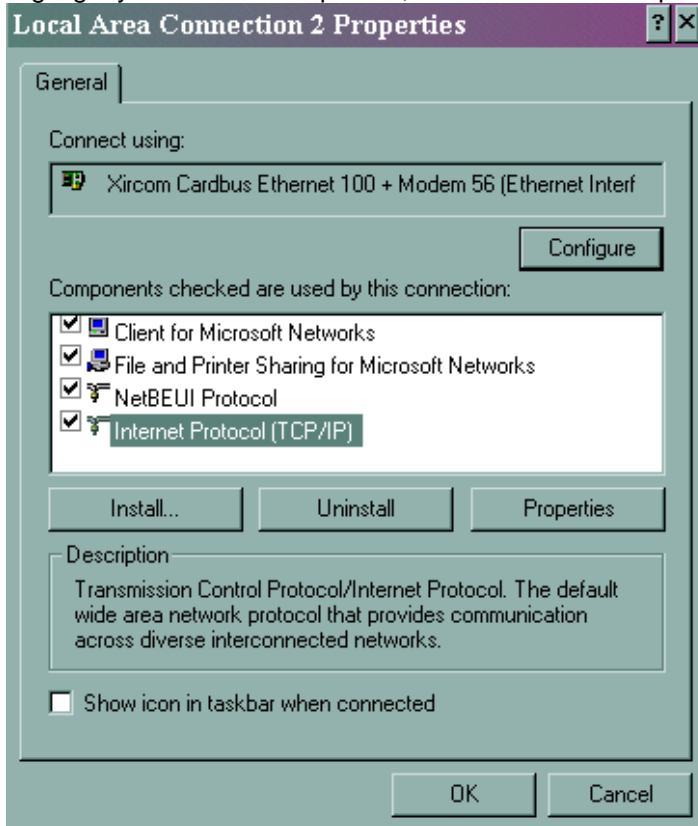
Local Area Connection 2

Type: LAN Connection

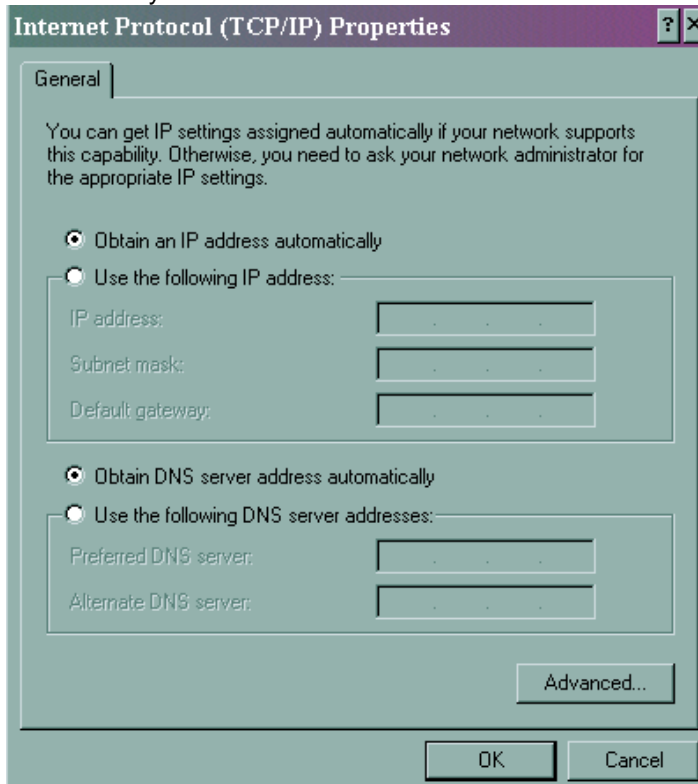
Status: Enabled

Xircom Cardbus Ethernet 100 +
Modem 56 (Ethernet Interface)

4. Highlight your TCP/IP component, then click on the Properties button.



5. Choose 'Obtain an IP address automatically', and then choose 'Obtain DNS server address automatically'. Click OK.



6. Click on OK on your Local Area Connection Properties box. You will need to reboot to obtain an IP address on our network.
7. If you haven't already plugged into a Hawk port, do so prior to rebooting.

