

Setting Up Your Laptop On Our Network using Windows 95/98/ME

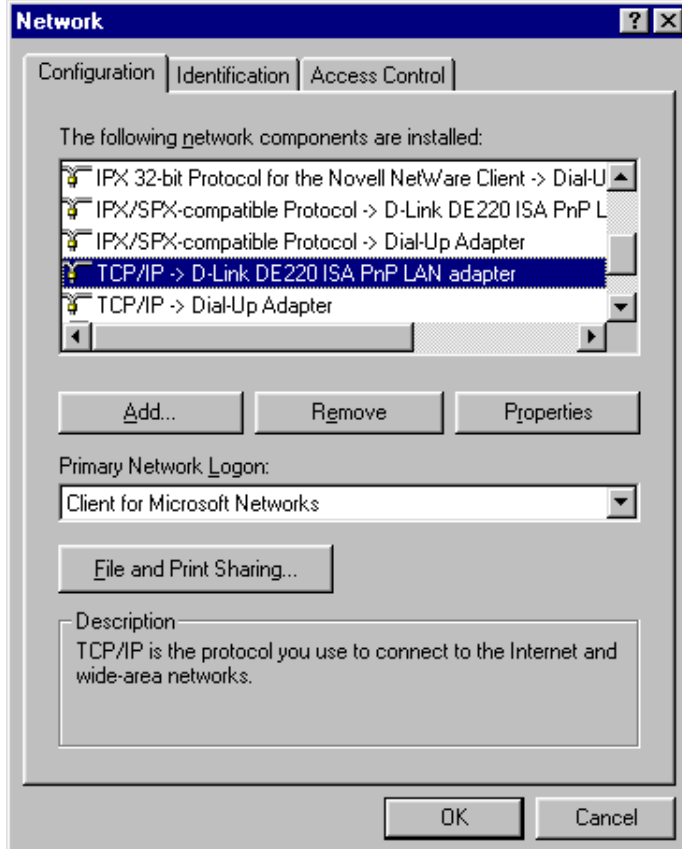
Disclaimer:

Henderson District Public Libraries (HDPL) does not provide firewall protection through the use of HAWK network service and is neither responsible nor liable for any viruses or other contamination of your system nor for any delays, inaccuracies, errors or omissions arising out of your use of this free service or with respect to the material contained on the Internet, including without limitation, any material posted on the Internet. Access to this service and all materials contained on it are distributed and transmitted "as is" without warranties of any kind, either express or implied, including without limitation, warranties of title or implied warranties of merchantability or fitness for a particular purpose. The HDPL is not responsible for any special, indirect, incidental or consequential damages that may arise from the use of, or the inability to use, the service and/or the materials contained on the Internet whether the materials contained on the Internet are provided by the HDPL, or a third party.

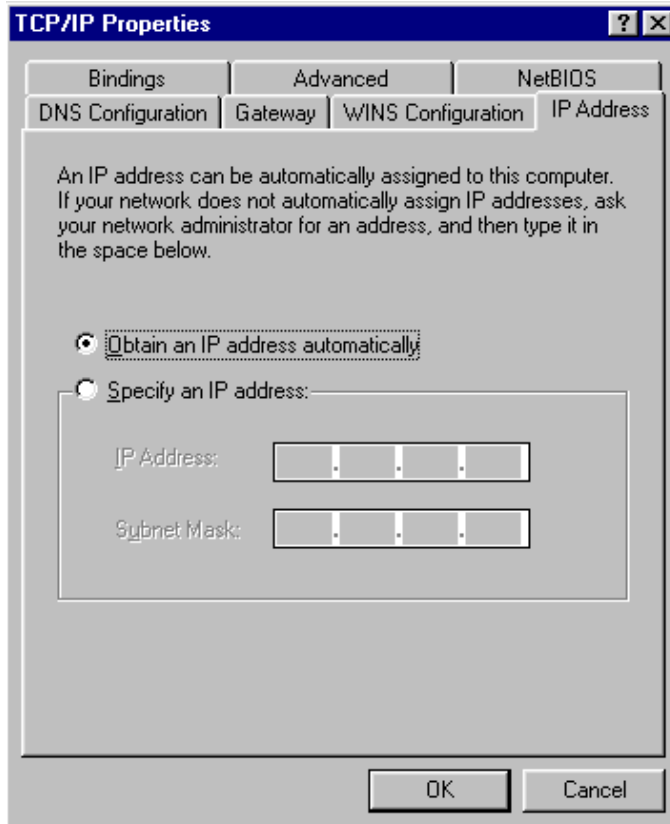
Instructions:

These instructions are for advanced users. This guide assumes that your computer has a network adapter and **TCP/IP** already installed. If your laptop is currently setup with a static IP address, we suggest you write down your settings before making any changes. HDPL cannot be responsible for any problems you may have after changing your IP address. Our reference staff cannot help you make these changes. You must provide your own network cable to connect to our network.

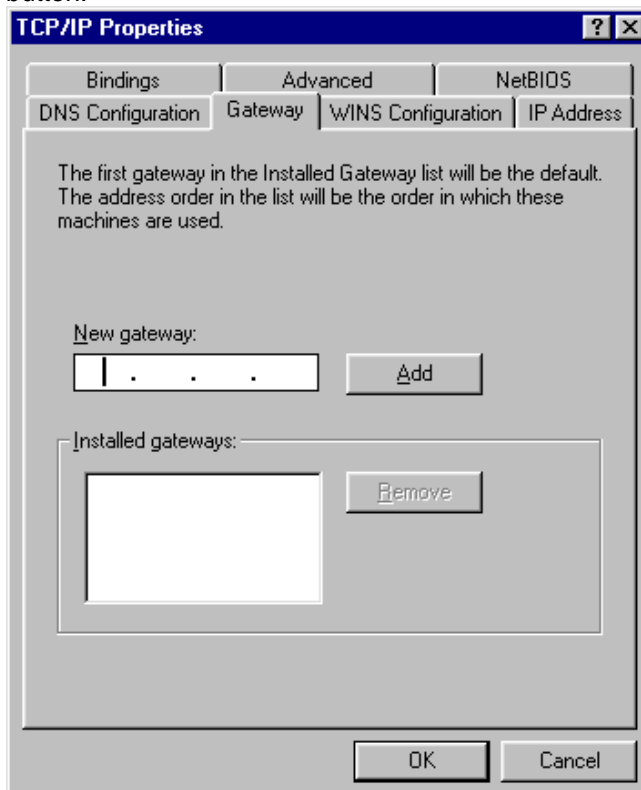
1. Start your system normally.
2. Once started, click on Start, Settings, and Control Panel.
3. Double click on the **Network** Control panel.
4. Under the **Configuration** tab, double-click on the **TCP/IP** component for your ethernet adapter (not the **TCP/IP -> Dial-Up Adapter** or the **TCP/IP -> AOL Adapter**).



5. On the **IP Address** tab; click on **Obtain an IP address automatically**.



6. On the **Gateway** tab; Click on the **installed gateway** address (if there is one) and the **Remove** button.



7. If you haven't already plugged into a Hawk port, do so now.



8. Click **OK** to close the **TCP/IP Properties** window.
9. Click **OK** to close the **Network** window.
10. Click **Yes** to **Restart** your computer.